

Art & Exhibits in the Library

The Hollis Social Library hosts a variety of temporary and permanent art exhibits.

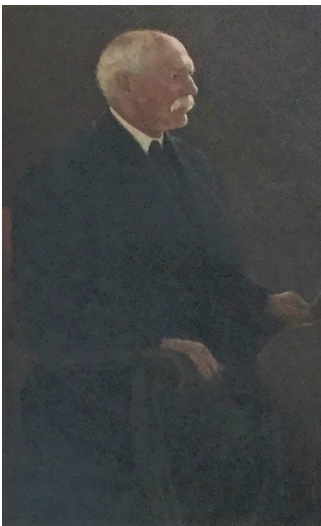
Anne Hathaway's Cottage



By the end of the 1850's, Jasper Cropsey strayed from his canvases representing idealism and moralism to paint straightforward pastoral scenes. In 1856, Jasper Cropsey made a second trip to England, planning to work on a number of commissions from American collectors looking for romantic, ancient aspects of the English

countryside. One mile from Stratford-on-Avon in the hamlet of Shottery, he discovered a charming reminder of Elizabethan England. Completed fifteen years after his visit, this highly finished oil shows a Ruskinian dedication to architectural and botanical detail. Anne Hathaway's Cottage, was donated to the Hollis Social Library in 1911 by Mrs. Mary J. Bill, having been "one of the gems in the collection of oils for which her drawing room was famous."

Portrait of Franklin Worcester



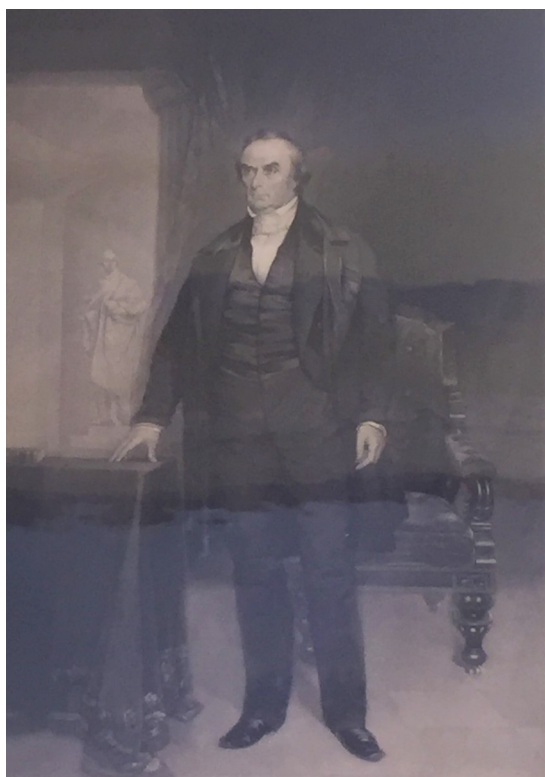
A large, framed portrait of Franklin Worcester, benefactor of the Hollis Social Library, was donated in 1918 by five Worcesters (Mrs. Samuel, Mrs. C. Federick, Miss Elizabeth, Miss Helen and Master Franklin). The artist is Newton T. Hartsborn. Franklin Worcester headed the committee that raised the initial capital for the original library building opened in 1910 and became the first Chariman of the Library Trustees.

Portrait of Benjamin Mark Farley



A crayon portrait of Benjamin Farley was presented to the library in 1910 by his granddaughter, Miss Fannie Phelps. Mr. Farley, born April 8, 1783, graduated Harvard in 1804, subsequently admitted to the bar and settled in his profession in Hollis in 1808 where he lived till 1855. He died in 1865 at the age of 82. Mr. Farley was president of the Hillsboro bar, and served in the State House of Representatives from 1814 to 1829. Mr. Farley became much interested in the library. After its removal to the church building it is said that he and Joseph Worcester offered to give fifty dollars each towards its support provided the town would give one hundred. This offer was readily accepted thus making Mr. Farley one of the first donors to the Library. (Source: Hollis Times)

Engraving of Daniel Webster



A steel engraving of Daniel Webster was likewise donated in 1918 by five Worcesters (Mrs. Samuel, Mrs. C. Federick, Miss Elizabeth, Miss Helen and Master Franklin). The engraving is printed by Chester Harding and engraved by J. Andrews and H.W. Smith.

Hollis Social Library In Spring



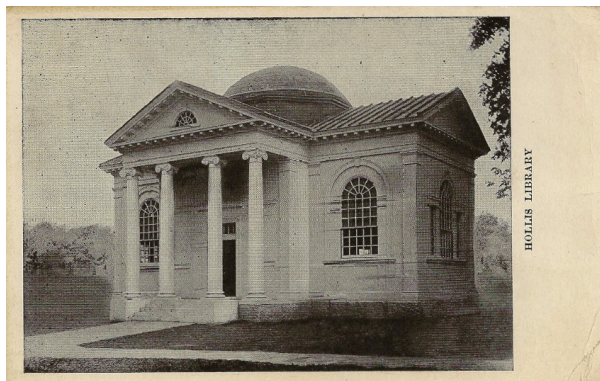
An oil painting of the library during spring by the artist Ken Fiery. Ken gifted his painting to the Hollis Social Library in August 2011 in “great appreciation for the role that the library fulfills in the life of the community” and as a thank-you to the library for hosting “a major exhibit of [his] paintings during September 2004.”

Bird Collection



A favorite of young children visiting the library is the collection of mounted local birds. This display case is located in the building’s historic old front entrance near the display case of historical library items and documents. The birds were a gift from the Stickney family.

Temporary Artist Exhibits



The Hollis Social Library is proud to host monthly artist displays . Each month artwork from a local area artist is featured in the Hollis Social Library’s Meeting Room. Check our website for information about this month’s current featured artist.
hollislibrary.org